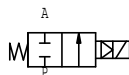
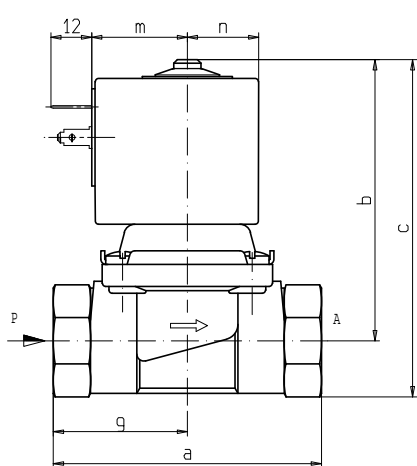


SOLENOID VALVE
2/2 - NC (Normally closed)
Pilot operated hung diaphragm
G3/8 ÷ 1

L133



D	a	b	c	e	f	m	n	s	g
G 3/8	60	69,8	80,8	30	40,2	21,6	19,9	22	25,5
G 1/2	66	74,5	90	30	40,2	21,6	19,9	27	-
G 3/4	79	81	98	42	51	28	21	33	-
G 1	105	100	121	48,6	71	35	24,3	42	46

► GENERAL FEATURES

Pilot operated hung diaphragm valve with full orifice.
 Designed for closed circuit hydraulic systems and for vessels draining.
 Suitable to shut off liquid and gaseous fluids (verify the compatibility of fluid with materials in contact).

► CARATTERISTICHE TECNICHE

Maximum allowable pressure (PS) 16 bar
Opening time from ~100ms to ~150ms
Closing time from ~100ms to ~400ms
Fluid temperature -10°C +90°C (NBR)
 0°C +130°C (FPM)
 -10°C +140°C (EPDM)
Max viscosity 5°E (~37 cStokes or mm²/s)

► MATERIALS IN CONTACT WITH FLUID

Body Brass
Sealing NBR or FPM or EPDM
Internal components Stainless steel and PPS (G3/8 – G1/2)
 Stainless steel and brass (G3/4 – G1)
Seat Brass
Core tube Stainless steel
Shading coil Copper (except L133(*)17)

► COIL

Continuous duty ED 100%
Encapsulation material PET (polyethylene terephthalate) fiberglass reinforced
Insulation class ZA: F (155°C) on request class H (180°C) - UL
 Z1-Z9: F (140°C) on request class H (165°C) - UL
Ambient temperature ZA: -10°C +50°C
 Z1-Z9: -10°C +60°C
Electric connections DIN 46340 - 3 poles connectors (EN175301-803)
Protection degree IP 65 (EN 60529) with plug connector
Voltages DC 12-24V (+10% -5%)
 AC 24V/50Hz-110V/50Hz(120V/60Hz) - 230V/50Hz (+10% -15%)
 (Other voltages and frequencies on request).

Port size ISO 228	Orifice size (mm)	Differential pressure (bar)				Kv (m ³ /h)	Series and type		Power absorption			Sealings	Notes	Weight (kg)	
		Δp min	Δp max				Valve	Coil	AC (VA)		DC				
			Gas		Liquids				Inrush	Holding					
			AC	DC	AC										DC
G3/8	12.5	0	10	3	10	3	L133(*)16	ZA30A	23	14	9	(*) = B (NBR) (*) = V (FPM) (*) = D (EPDM)	-	0,350	
			-	8	-	8									L133(*)17
G1/2			10	3	10	3	L133(*)16	ZA30A	23	14	9				
			-	8	-	8									L133(*)17
G3/4	17	10	3	10	3	L133(●)07	Z130A	44	24	13	(●) = B (NBR)	0,790			
G1	24	9	10	-	10	-	L133(●)06	Z923E	65	33	-	(●) = V (FPM)	1,810		
			-	3	-	3		Z923A	-	-	17				

► NOTES

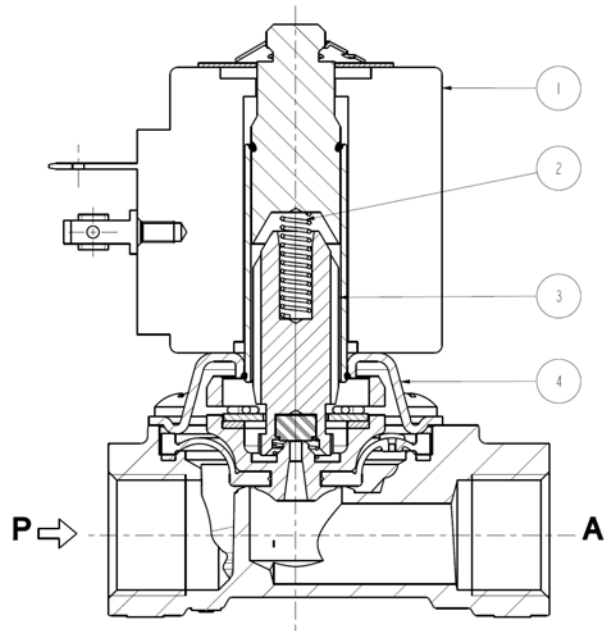
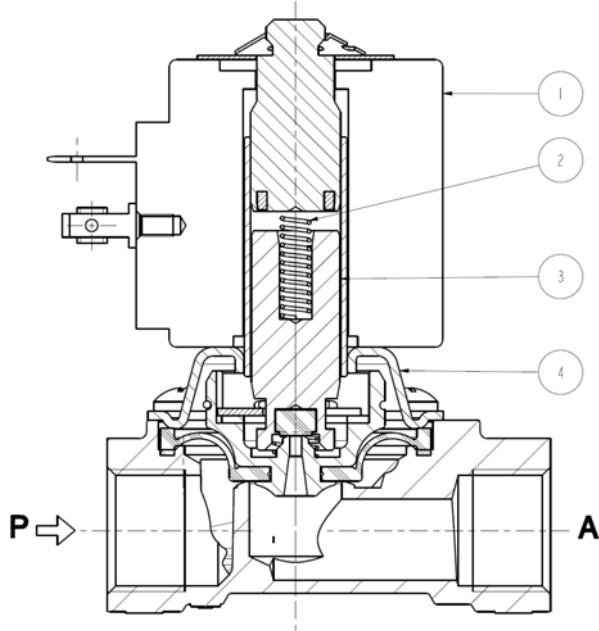
- Sealings : NBR = Nitrile-butylene elastomer FPM = Fluoro-carbon elastomer EPDM = Ethylene-propylene elastomer (WRAS/KTW homologated compound)
 - The nominal flow is guaranteed with Δp min ≥ 0,3 bar. Contact us in case of lower Δp min values.

L133

► SPARE PARTS

L133B06 - V06 - B07 - V07 - B16 - V16 - D16

L133B17 - V17 - D17



Kit description

Core diaphragms kit

Port Size	Part Number	Kit P.N.
G 3/8 - 1/2	L133B16	G3145301
	L133V16	G3145302
	L133D16	G3145303
	L133B17	G3145201
	L133V17	G3145202
	L133D17	G3145203
G 3/4	L133V07	G2990202
	L133B07	G2990201
G 1	L133V06	G2991902
	L133B06	G2991901

Core return spring kit

Port Size	Part Number	Kit P.N.
G 3/8 - 1/2	L133B/V/D16/17	G3103701
G 3/4	L133B-V07	G2918601
G 1	L133B-V06	G2955801

Guide assembly

Port Size	Part Number	Kit P.N.
G 3/8 - 1/2	L133B/V/D16	3104101R
	L133B/V/D17	3120901R
G 3/4	L133B-V07	3077701R
G 1	L133B-V06	2408202R

Coil

Port Size	Part Number	Kit P.N.
G 3/8 - 1/2	L133B/V/D16	ZA30A
	L133B/V/D17	ZA32K
G 3/4	L133B-V07	Z130A
G 1	L133B-V06 (c.a.)	Z923E
	L133B-V06 (c.c.)	Z923A

Consisting of:

Core return spring pos. 2
Diaphragm assembly with core assembly pos. 3

n°10 core return springs pos. 2

Guide assembly pos. 4

Coil pos. 1

► INSTALLATION

Solenoid valve can be mounted in any position; vertical with coil upwards preferred.