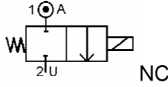


Media: air – water – gas – light oil - vacuum  
 Pressure range: 0 to 10 bar max  
 Media temperature: 120° C max  
 Ambient temperature: -10° to +50° C max  
 Media viscosity: 50 centistokes max  
 Mounting: any position  
 Opening / Closing time: 20 mSec Max



# 2/2 Stainless

## N/CLOSED

### 2 WAY DIRECT ACTING

# TYPE ADS812



#### PRESSURE

Ø Port	Ø Orifice (mm)	Coil Size	Flow Rate	Pressure Rating (bar)			Seals	Max Media Temp °C	Part Number	List Price				
			Cv Ltr/min	Min ΔP	Max ΔP AC	Max ΔP DC								
1/4 BSP	3.0	WPA1	4	0	10	7	NBR SILICONE EPDM FKM PTFE	80°C - 120°C	15ML316	£79.34				
	4.0		5.5	0	7	5								
	5.0		7.2	0	5	3.5								
3/8 BSP	4.0	WPA2	5.5	0	10	7			NBR SILICONE EPDM FKM PTFE	80°C - 120°C	15ML316	£117.37		
	6.0		10.5	0	5	3.5								
	8.0		16.2	0	2	1.4								
1/2 BSP	6.0	WPA2	10.5	0	5	3.5					NBR SILICONE EPDM FKM PTFE	80°C - 120°C	_____	£126.90
	8.0		16.2	0	2	1.4								

#### OPTIONS

Connector PG9 – DIN 43650 A IP65 coil Explosion Proof WPA2 Coil: EExmII T4 ATEX IIG IP65 T 130°C (Optional T6 T 85°C) High temp N Rated coil 200°C Silver shading ring		Included Included +£80.38 +£20.66 +£26.91
------------------------------------------------------------------------------------------------------------------------------------------------------------------------------------	--	-------------------------------------------------------

#### ELECTRICAL DATA

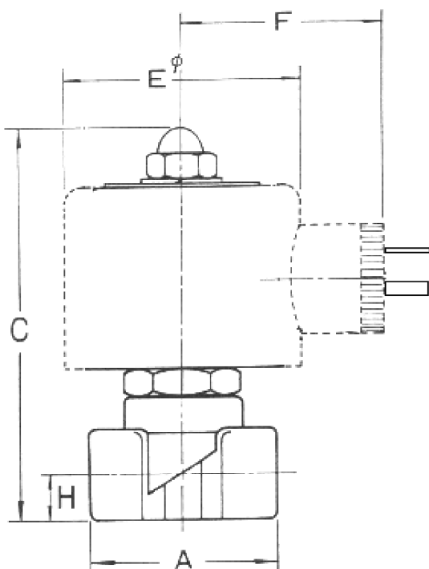
Voltage (-10% + 15%) Continuous duty 100%	Coil Size	Power		Insulation class	Enclosure	Electrical connections
		Inrush	Holding			
~ 24 - 110 - 230 (50 or 60 Hz)	WPA1	28VA	15.4VA	H 180°C	IP 65 with connector	3 spades DIN 43650A DIN 40050 VDE 0110
= 12 - 24 (DC)		12 WATTS				
~ 24 - 110 - 230 (50 or 60 Hz)	WPA2	40VA	24.2VA			
= 12 - 24 (DC)		18 WATTS				

#### CONSTRUCTION

Body: Forged 316 stainless steel (CF8M)  
 Tube 304 stainless steel, armature 430F stainless steel  
 Shading ring: copper  
 Seals and gaskets: FKM (Optional EPDM or NBR or SILICONE or PTFE)  
 Moulded coil: Resin

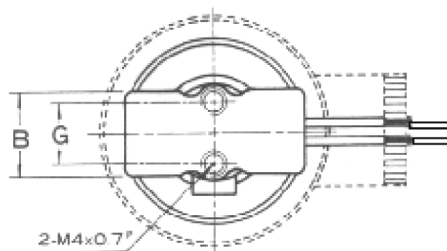
#### REPAIR KIT

Coil	Coil size (WPA1 OR WPA2) + voltage
Core tube & armature assembly	SP209+210 + valve part number

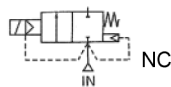


Model	A	B	C	D / E	F*	G	H	Kg
ADS 8	41	85	86	56	63	15	10.5	0.47
ADS 10	50	90	90	58	65	15	11.7	0.73
ADS 12	55	91	91	58	65	TBA	13	0.78

< Includes Connector



Media: vacuum (10 Torr) - air - water - light oil  
 Pressure range: 0 to 10 bar max  
 Media temperature: 90°C  
 Ambient temperature: -30° to +40°C  
 Media viscosity: 50 centistokes  
 Mounting: preferred coil upright  
 Opening / Closing 100 mSec Max



# 2/2 Stainless

N/CLOSED  
 2 WAY ASSISTED LIFT

## TYPE MD316M16



### PRESSURE

Ø Port BSPT	Ø Orifice (mm)	Flow Rate Cv Ltr/ min	Pressure Rating (Bar)			Seals	Max Media Temp. °C	Part Number	List Price
			Min ΔP	Max ΔP Air/ Water	Max ΔP Oil				
1/2	16	61.7	0	10	7	EPDM NBR	90	15ML316	£105.43
3/4	23	105.0	0	10	7	EPDM NBR	90	15ML316	£120.07
1	28	133.3	0	10	7	EPDM NBR	90	15ML316	£140.57
1 1/4	32	217	0	10	7	EPDM NBR	90	15ML316	£202.07
1 1/2	40	338	0	10	7	EPDM NBR	90	15ML316	£248.93
2	50	533	0	10	7	EPDM NBR	90	15ML316	£322.14

### OPTIONS

Connector PG9 - DIN 43650 A  
 IP65 Coil  
 NPT Thread

Included  
 Included  
 +10%

### ELECTRICAL DATA

Voltage (-10% + 10%)	Coil Size	Power		Insulation class	Enclosure	Electrical connections
		Inrush	Holding			
~ 24 - 110 - 230 (50 or 60 Hz)	M16	50VA	26VA	F 155°C	IP 65 with connector	3 spades DIN 43650 DIN 40050 VDE 0110
= 24 (DC)		21 Watts				

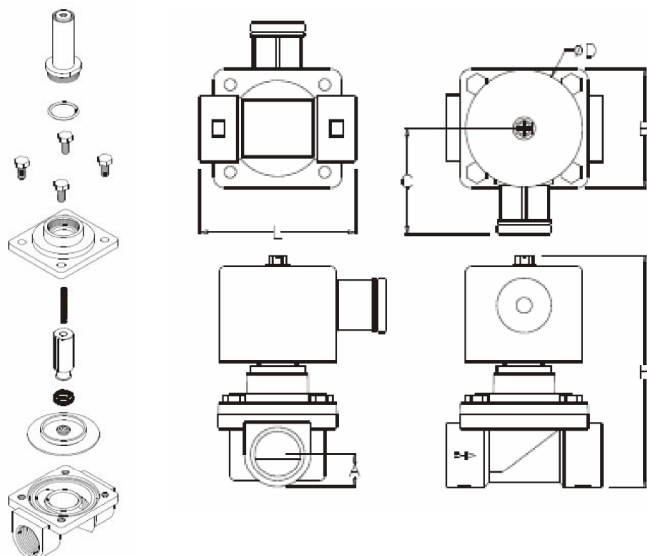
### CONSTRUCTION

Body: 316 Stainless Steel (CF8M)  
 Tube and internal parts: 304, 430F Stainless steel  
 Seals and gaskets: EPDM (Optional NBR)  
 Moulded coil: Resin F rated

### REPAIR KIT

Diaphragm seal	MDSUS + orifice + material
Coil	M16 + Voltage
Complete plunger + O' rings	KIT + valve part number

### OVERALL DIMENSIONS



Model	Port	L	B	C	H	Kg
MD15	1/2	70	52	51	112	0.8
MD20	3/4	80	62	61	122	1
MD25	1	90	72	71	132	1.25
MD32	1 1/4	120	136	82	138	1.9
MD40	1 1/2	136	146	96	145	2.6
MD50	2	160	156	112	160	4



Stainless  
 Steel  
 PTFE  
 Page 75